



CREATING A CLEANER, SAFER, HEALTHIER WORLD.

EQUIPMENT



# S9

## LARGE BATTERY WALK-BEHIND SWEEPER

- Experience maximum productivity and debris pick-up with TwinMax™ sweeping technology and dual side brushes for consistent edge sweeping
- Clean large areas quickly and easily with constant broom drive and motor, large path width, and 2.2 ft<sup>3</sup> / 60 L hopper capacity
- Rely on quality construction with durable components that have been field-proven in commercial applications

## SWEEP SMARTER, NOT HARDER WITH THE TENNANT S-SERIES SWEEPERS.



### EXPERIENCE MAXIMUM PRODUCTIVITY

Propel system makes cleaning quick and effortless. Dual side brushes increase the sweeping path to 35 in / 900 mm, and extra large hopper saves you trips to the dumpster, which gives you more time for cleaning.

### RELY ON QUALITY CONSTRUCTION AND PROVEN COMPONENTS

Major components field-proven in commercial applications for 2 years. Durable roto-molded design is backed by a 2 year, TennantTrue<sup>®</sup> warranty, and side brush protected by brush bumper.

### SMART, INTUITIVE DESIGN

Increase productivity with simple, no-tool side brush adjustments and easy-to-use operation for less time training and more time cleaning. Self-propelled operation and broom drive, combined with adjustable, ergonomically designed handle makes operator comfort a priority.

### VERSATILE ANYTIME, ANYWHERE CLEANING

The S9's flexible design is well suited for large, indoor and outdoor areas. Quiet 62 dBA sound level means you can sweep anytime, anywhere, even in noise-sensitive environments.

INSIDE THE

# S9



## TWINMAX™ SWEEPING TECHNOLOGY

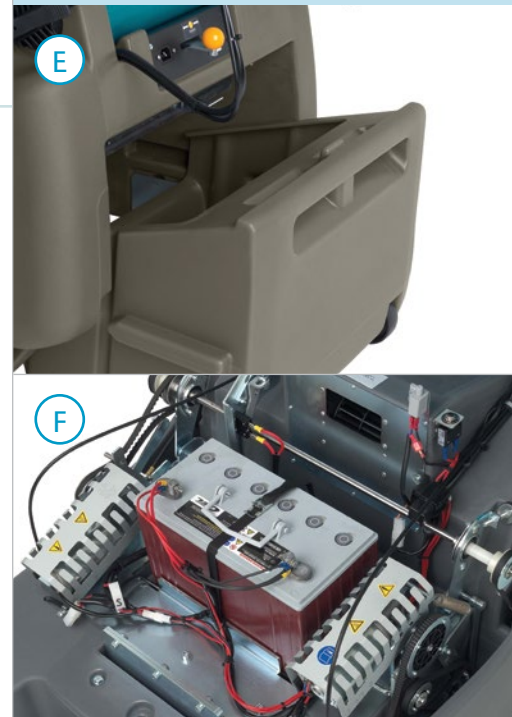
Equipped with Tennant's TwinMax sweeping technology, the S3 cleans your floors in a single pass. The twin, counter-rotating brushes combine overthrow and direct sweeping principles to capture large and small debris with one machine.



TwinMax technology is designed for sweeping multiple surfaces in both indoor and outdoor environments, giving you maximum versatility for anytime, anywhere cleaning.

- A** **Self-propelled operation** makes sweeping large areas quick and easy.
- B** **No-tool, fully adjustable dual side brushes** clean corners and edges easily without changing directions. Increased cleaning path coverage increases productivity and can be adjusted to your floor surface for optimal cleaning.
- C** **Adjustable, ergonomically designed handle** increases operator comfort.

- D** **TennantTrue® brushes** are designed to fit your machine and deliver optimal cleaning performance. Chevron bristle pattern and TwinMax technology work together to pick up more debris in a single pass.
- E** **Large 2.2 ft³ / 60 L hopper** reduces empties and is easy to remove, simplifying the cleaning process and increasing operator productivity.
- F** **Maintenance-free batteries** make owning an S9 easy to maintain and safe.





## TENNANTTRUE® PARTS, SERVICE AND FINANCE SOLUTIONS

- Reduce rework, labor and safety costs by using only TennantTrue parts and service.
- Ensure optimal cleaning performance by selecting a TennantTrue Service program.
- Improve uptime by leveraging TennantTrue parts and service.

## S9 LARGE BATTERY WALK-BEHIND SWEEPER

### SWEEPING SYSTEM

Cleaning path	35 in / 900 mm
Productivity	
Practical (per ISSA 540 cleaning times)	23,620 ft <sup>2</sup> /hr / 3,150 m <sup>2</sup> /hr

### BRUSH DRIVE SYSTEM

Brush speed	390 rpm
Main brush length (tubular)	20 in / 500 mm
Side brush diameter (disk)	14 in / 354 mm
Debris hopper volume capacity	2.2 ft <sup>3</sup> / 60 L
Power transmission	Maintenance-free, high-performance belt drive

### POWER SYSTEM

Battery type	12 V Gel
--------------	----------

### DUST CONTROL SYSTEM

Filtration type	99.97 @ .3 microns
Filter area	32 ft <sup>2</sup> / 3 m <sup>2</sup>

### MACHINE SPECIFICATIONS

Length	42.7 in / 1085 mm
Width	31 in / 799 mm
Height	26 in / 658 mm
Weight	
With battery	300 lb / 137 kg
Without battery	214 lb / 97 kg
Sound level (operator's ear)	62 dBA

### WARRANTY

See your local representative for warranty information

Specifications subject to change without notice.

## SEEING IS BELIEVING

For a demonstration or additional information,  
send an email to [info@tenantco.com](mailto:info@tenantco.com)

Tennant  
701 North Lilac Drive  
Minneapolis, MN 55422 USA

USA: +1.800.553.8033  
Overseas: +1.763.540.1315

[www.tennantco.com](http://www.tennantco.com)  
[info@tenantco.com](mailto:info@tenantco.com)